

NOTE:
RED = SANITARY SEWER
BLUE = POTABLE WATER



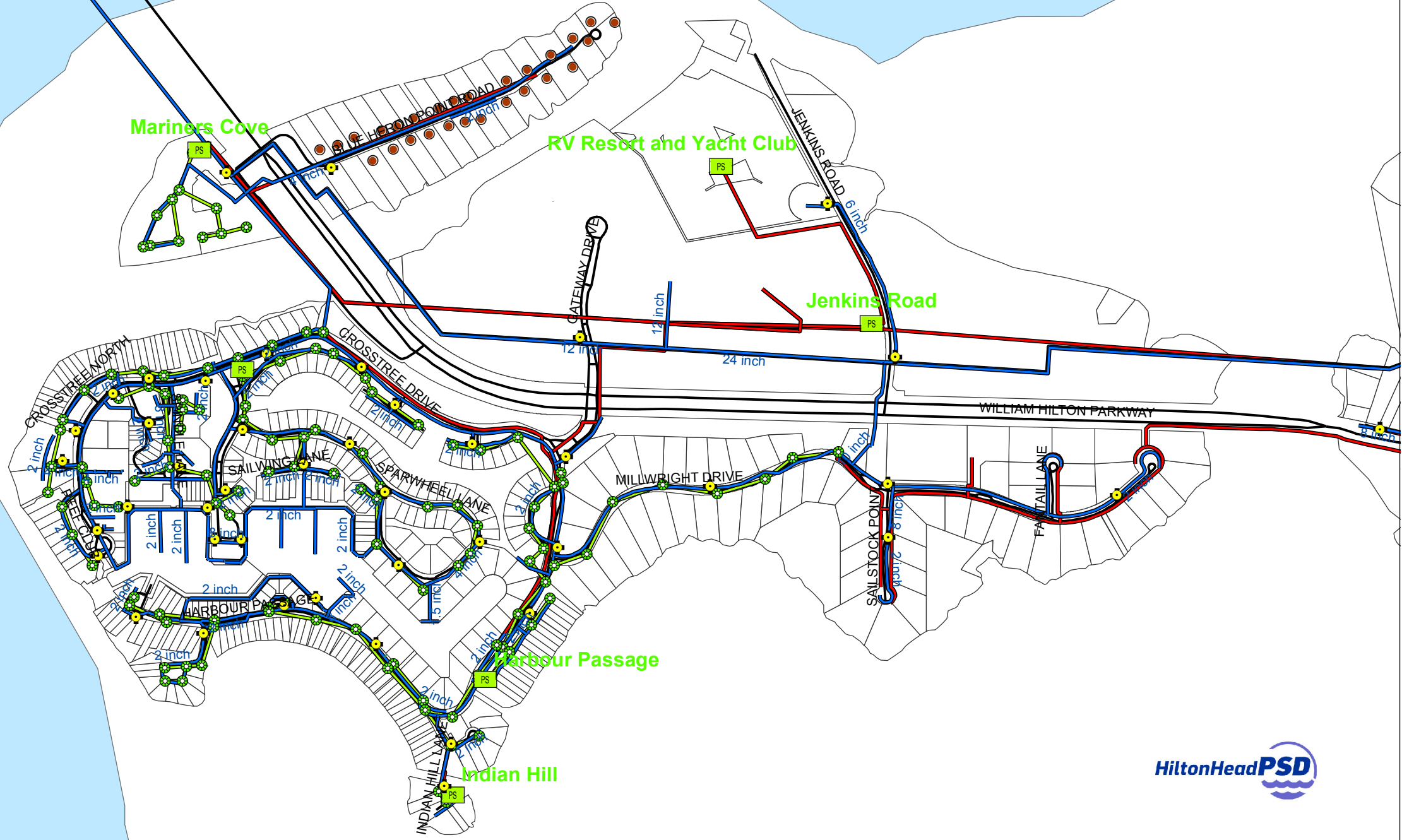
Mariners Cove

RV Resort and Yacht Club

Jenkins Road

Harbour Passage

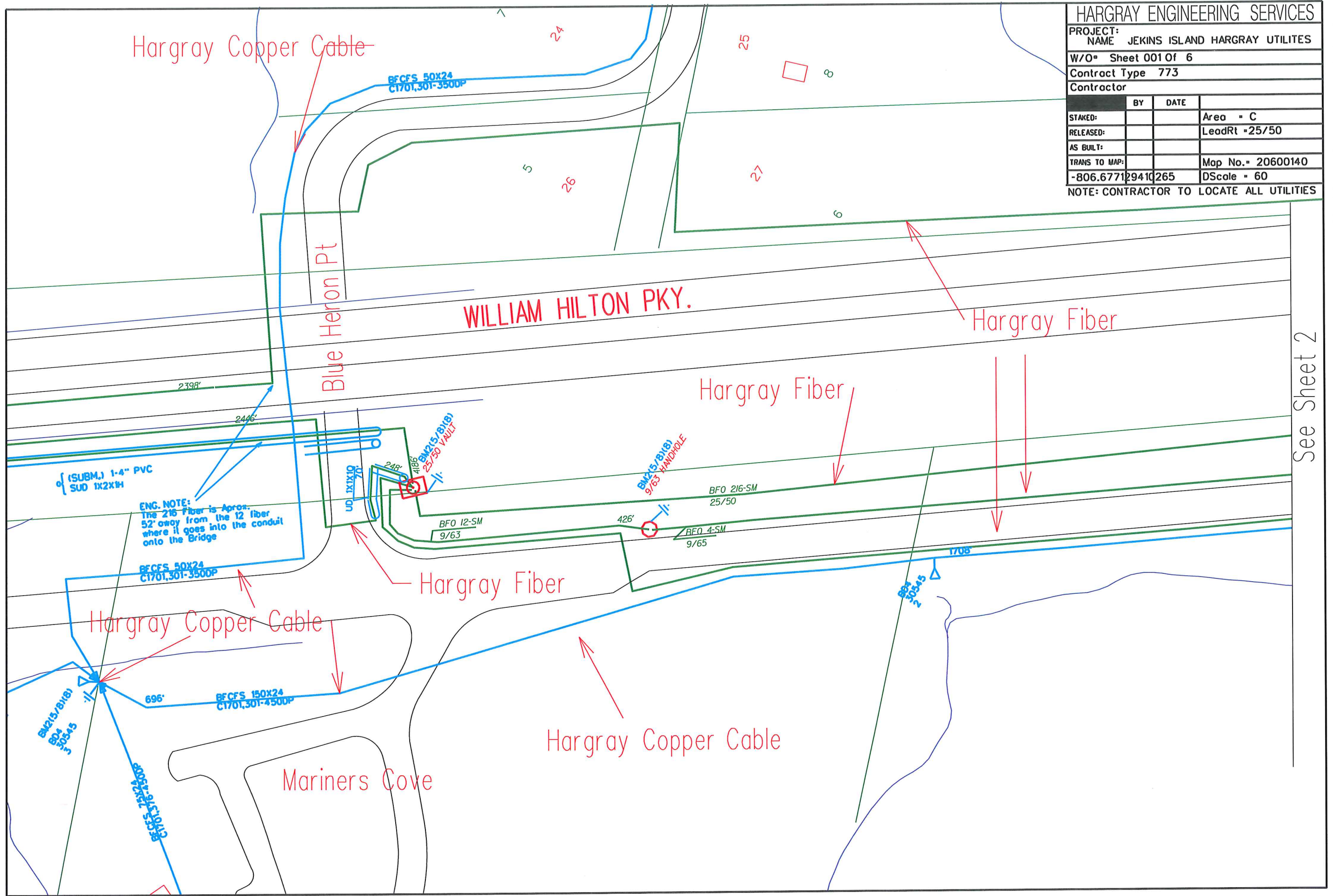
Indian Hill



1 inch = 200 feet



HARGRAY ENGINEERING SERVICES			
PROJECT: NAME JEKINS ISLAND HARGRAY UTILITES			
W/O# Sheet 001 Of 6			
Contract Type 773			
Contractor			
STAKED:	BY	DATE	Area = C
RELEASED:			LeadRt = 25/50
AS BUILT:			
TRANS TO MAP:			Map No. = 20600140
-806.677129410265			DScale = 60
NOTE: CONTRACTOR TO LOCATE ALL UTILITIES			



See Sheet 2

HARGRAY ENGINEERING SERVICES

PROJECT: NAME			
JEKINS ISLAND HARGRAY UTILITES			
W/O# Sheet 002 Of 6			
Contract Type 773			
Contractor			
	BY	DATE	
STAKED:			Area = C
RELEASED:			LeadRt -9/70
AS BUILT:			
TRANS TO MAP:			Map No. = 20600140
-707.0270	0466	0602	DScale = 60
NOTE: CONTRACTOR TO LOCATE ALL UTILITIES			

See Sheet 1

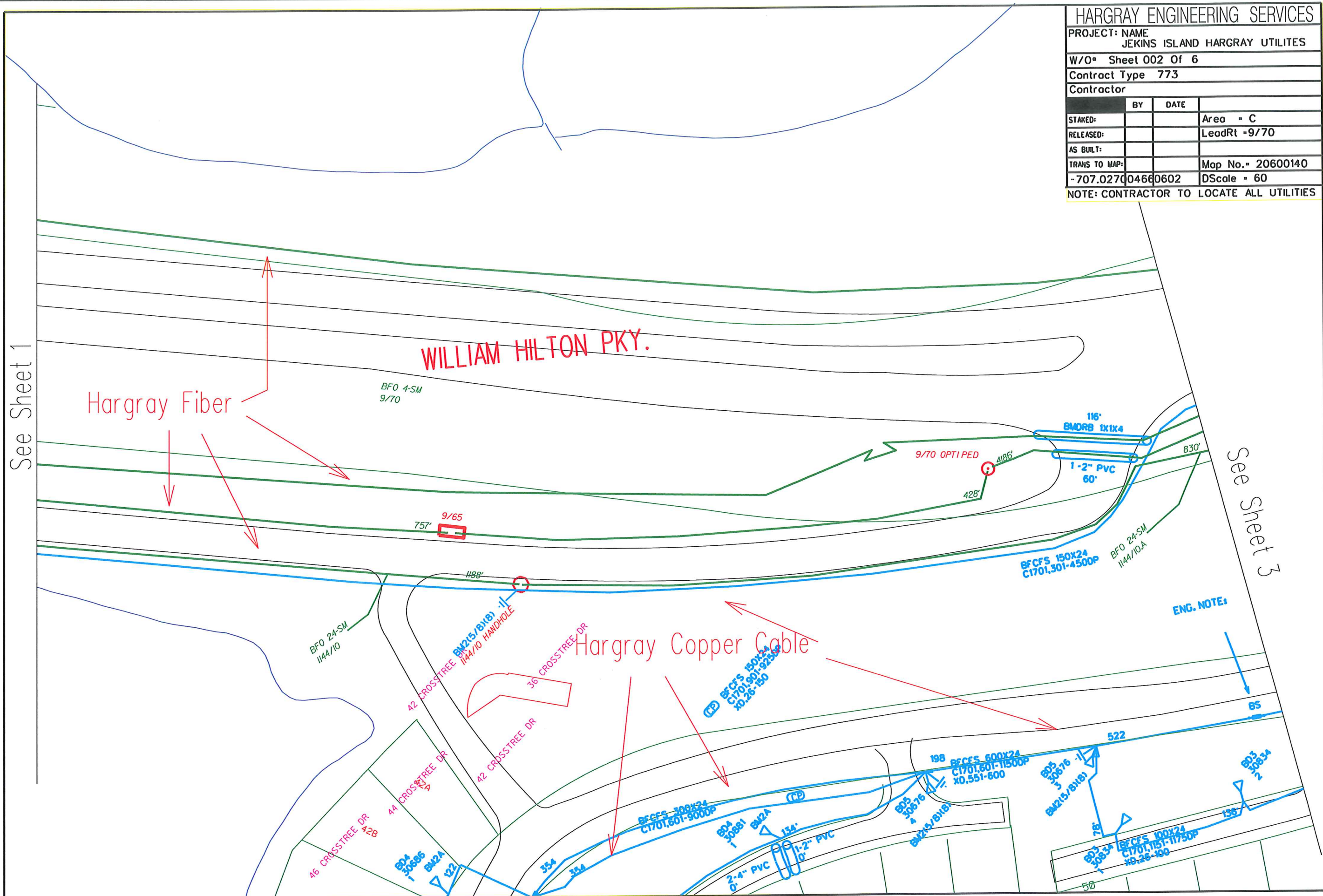
See Sheet 3

WILLIAM HILTON PKY.

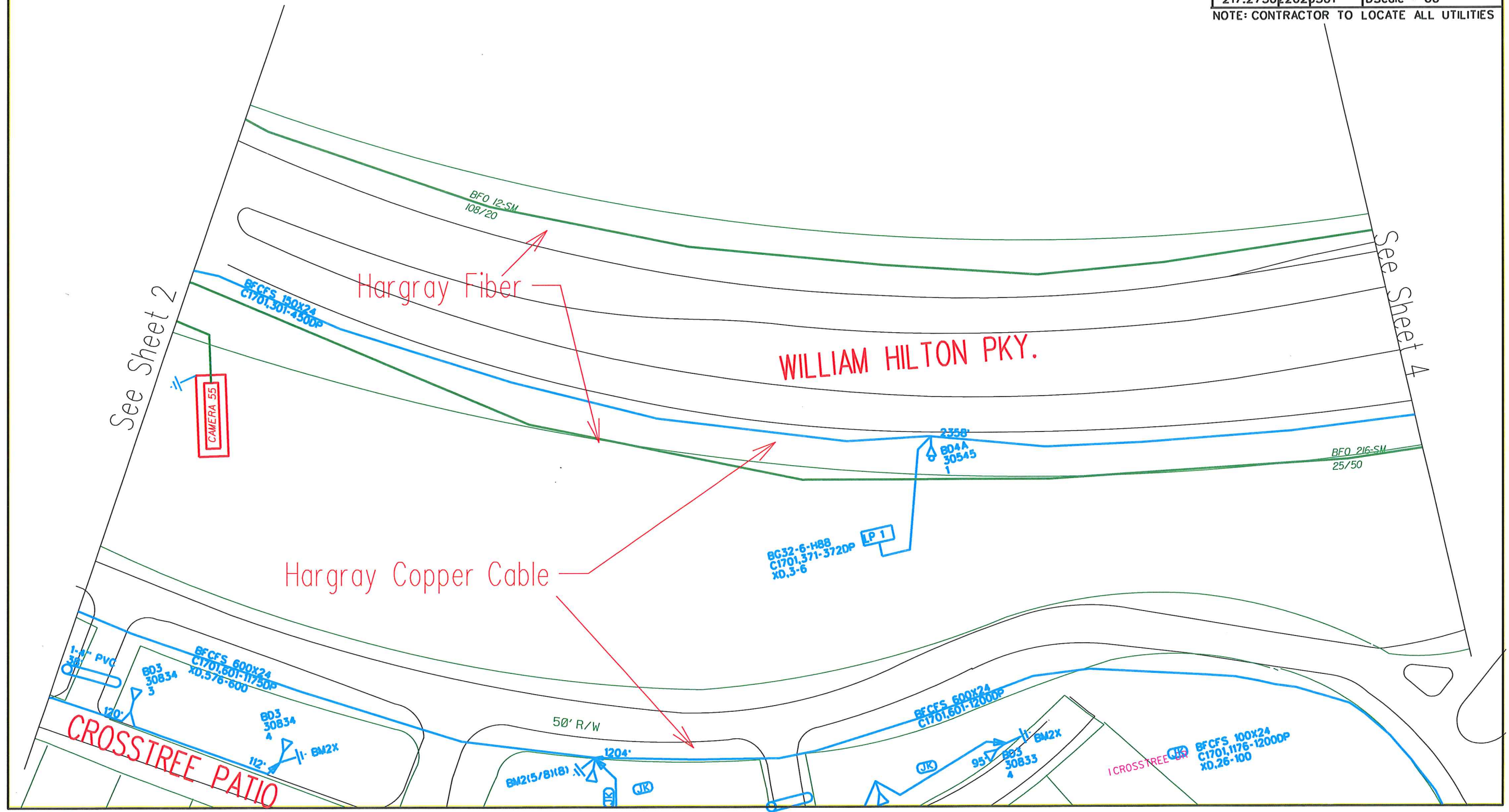
Hargray Fiber

Hargray Copper Cable

ENG. NOTE:



HARGRAY ENGINEERING SERVICES		
PROJECT: NAME JEKINS ISLAND HARGRAY UTILITES		
W/O# Sheet 003 Of 6		
Contract Type 773		
Contractor		
	BY	DATE
STAKED:		Area = C
RELEASED:		LeadRt = 1/2
AS BUILT:		
TRANS TO MAP:		Map No. = 20600140
-217.2750	22026501	DScale = 60
NOTE: CONTRACTOR TO LOCATE ALL UTILITIES		



See Sheet 2

See Sheet 4

E2,070,347.188

HARGRAY ENGINEERING SERVICES

PROJECT: NAME
JEKINS ISLAND HARGRAY UTILITES

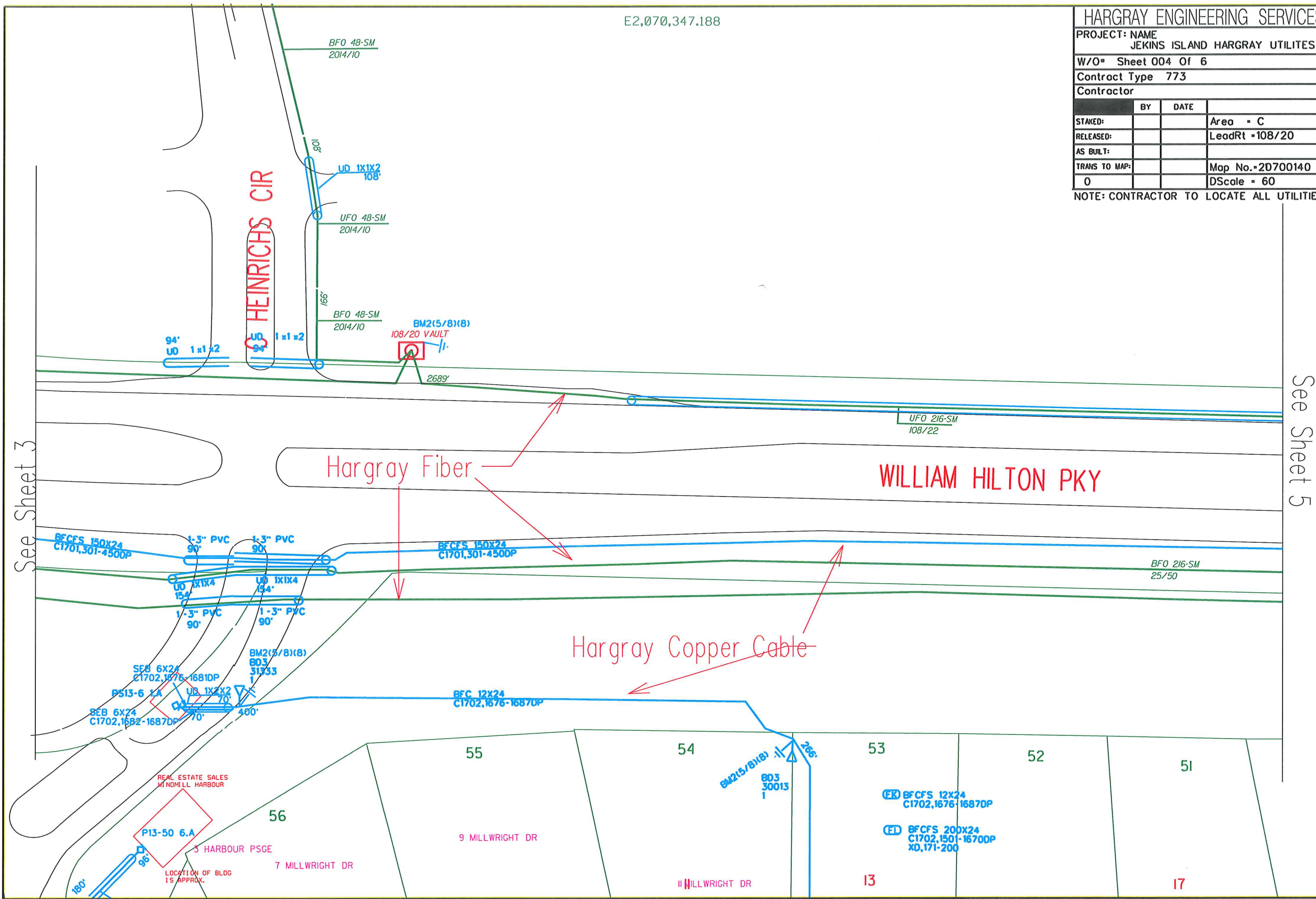
W/O= Sheet 004 Of 6

Contract Type 773

Contractor

	BY	DATE	
STAKED:			Area = C
RELEASED:			LeadRt = 108/20
AS BUILT:			
TRANS TO MAP:			Map No.=20700140
0			DScale = 60

NOTE: CONTRACTOR TO LOCATE ALL UTILITIES



See Sheet 3

See Sheet 5

HARGRAY ENGINEERING SERVICES

PROJECT: NAME
JEKINS ISLAND HARGRAY UTILITES

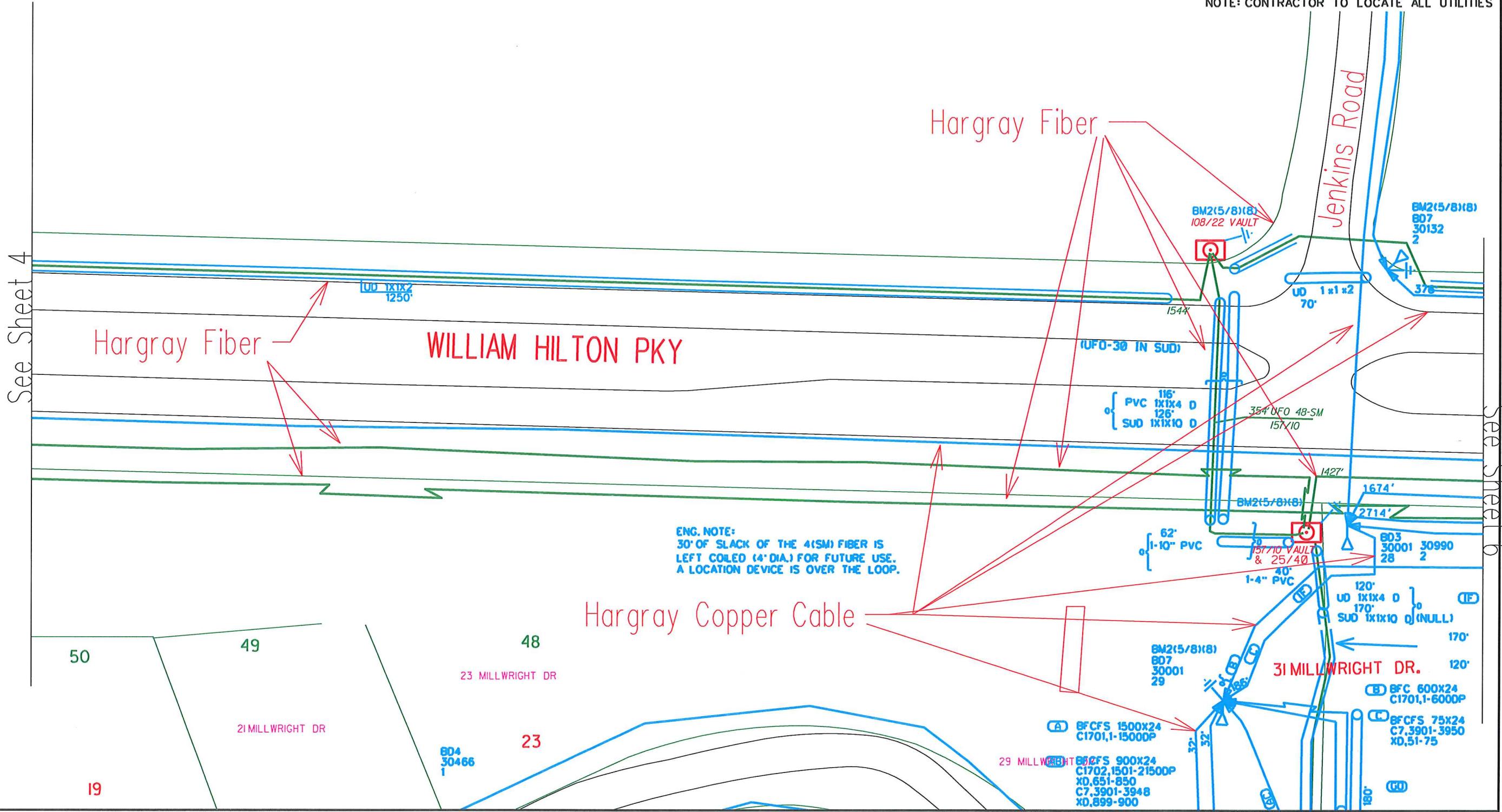
W/O# Sheet 005 Of 6

Contract Type 773

Contractor

	BY	DATE	
STAKED:			Area = C
RELEASED:			LeadRt = 108/22
AS BUILT:			
TRANS TO MAP:			Map No. = 20700140
0			DScale = 60

NOTE: CONTRACTOR TO LOCATE ALL UTILITIES



ENG. NOTE:
30' OF SLACK OF THE 4(SM) FIBER IS LEFT COILED (4" DIA.) FOR FUTURE USE. A LOCATION DEVICE IS OVER THE LOOP.

Hargray Fiber

WILLIAM HILTON PKY

Hargray Fiber

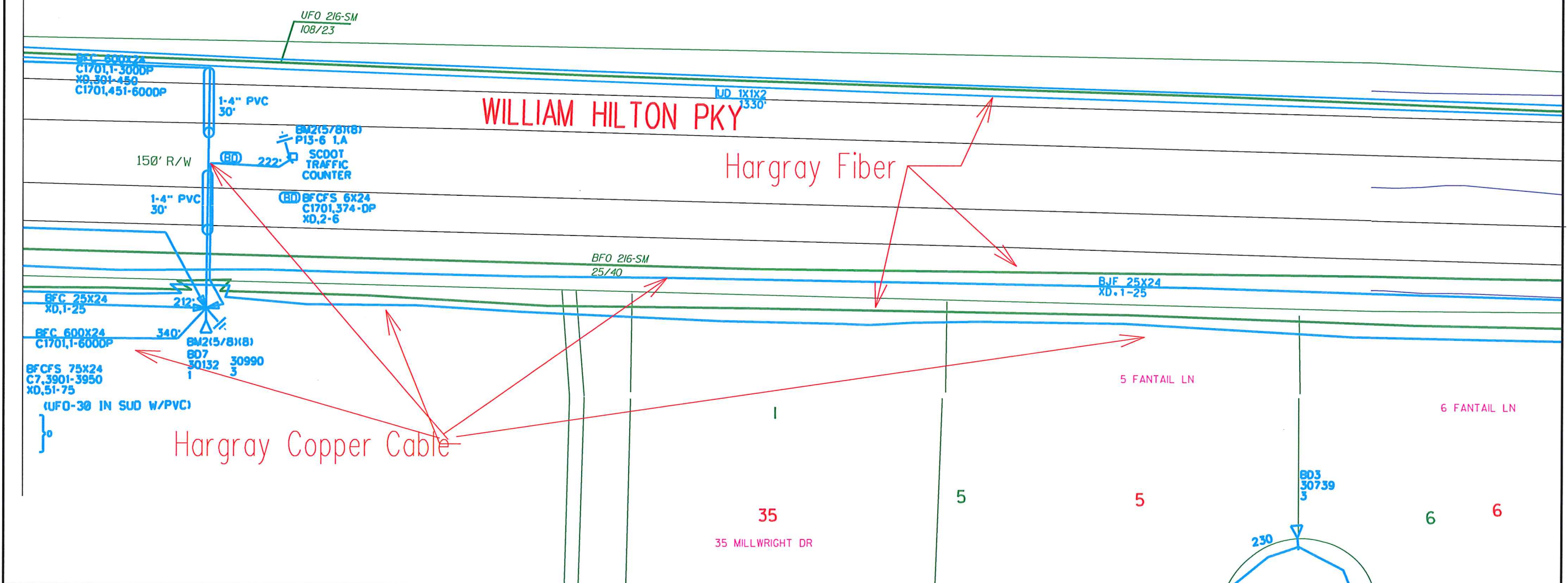
Hargray Copper Cable

See Sheet 4

See Sheet 6

HARGRAY ENGINEERING SERVICES			
PROJECT: NAME			
JEKINS ISLAND HARGRAY UTILITES			
W/O# Sheet 006 Of 6			
Contract Type 773			
Contractor			
	BY	DATE	
STAKED:			Area = C
RELEASED:			LeadRt = 108/23
AS BUILT:			
TRANS TO MAP:			Map No. = 20700140
0			DScale = 60
NOTE: CONTRACTOR TO LOCATE ALL UTILITIES			

See Sheet 5



April 19th, 2012

Mr. Alan Matienzo
c/o S. C. Department of Transportation
P. O. Box 191
Columbia, SC 29202-0191

Re: Jenkins Island Frontage Road Project – Blue Heron Point

Alan
Dear Mr. ~~Matienzo~~:

I recently met with representatives of the Blue Heron Point neighborhood to provide an overview of the frontage road project and to discuss their concerns over the project as proposed and access to their neighborhood. The Blue Heron Point neighborhood is served exclusively by S-7-772 and is situated on a land-tied island known as Hog Island. The meeting was rather productive and while the neighborhood does not appear to be enamored with the proposed frontage road, they seem to generally agree that it is the best long term solution relative to access to and from US 278.

During the meeting, the neighborhood representatives cited a pair of 60" RCP runs beneath US 278 and aligned roughly with Crosby Creek, a tidal estuary that divides Hog Island from Jenkins Island to the east. They claimed that a fill section placed across this tidal estuary when US 278 was widened from two lanes to four lanes in the 1970's has disrupted tidal flow and led to a degradation of water quality and navigability in the years since. They feel that the twin 60" RCP were constructed to extend from one side of the US 278 right-of-way to the other, but that the fill-section slopes extend outside of the right-of-way on both sides in a manner that effectively nullified any benefit from them.

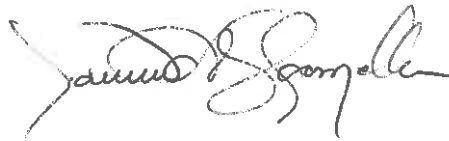
The community has apparently been engaged in a decades-long effort to restore this tidal flow beneath US 278 by obtaining the permits necessary to perform the excavations necessary to uncover the pipe ends, and is concerned that the subject frontage road project will make their efforts to accomplish this even more difficult. They are very interested in any opportunities to restore this tidal flow within the existing twin 60" RCP runs beneath US 278 that the frontage project may afford, and do not want to see additional fill placed to construct the new frontage road in a manner that counteracts this effort.

The neighborhood has provided me the enclosed documentation that summarizes their efforts to restore this tidal flow beneath US 278. I have reviewed it, and it paints a pretty clear picture of the history surrounding the matter. Excerpts of SCDOT plans portraying the location of the 60" RCP runs are included.

We discussed this at yesterday's meeting between Town staff and Department officials, including Resident Maintenance Engineer Mulligan, and there seemed to be a general unawareness of this issue or its history.

Please review this material as background information relative to the subject project's development, and let me know if we need to discuss or if you require additional information.

Sincerely,

A handwritten signature in black ink, appearing to read "Darrin A. Shoemaker". The signature is fluid and cursive, with a large initial "D" and "S".

Darrin A. Shoemaker, P.E.
Traffic and Transportation Engineer

Enclosure: Historical Documentation Packet

DAS/das

